



Shaping the Future Together

# CLG936LC

Hydraulic Excavator

Bucket Capacity	1.4-1.86(1.6)m <sup>3</sup>
Rated Power	259hp(194kW)@2200rpm
Net Power	240hp(180kW)@2200rpm
Operating Weight	36200kg



GUANGXI LIUGONG MACHINERY CO., LTD.

No.1 Liutai Road, Liuzhou, Guangxi

China 545007

T +86 772 3886124 3886125

F +86 772 3886122

[www.liugong.com](http://www.liugong.com)

[overseas@liugong.com](mailto:overseas@liugong.com)

## Engine

Model	CUMMINS 6CTA8.3-C260
Type	4-cylinder, 4-stroke, in line, water-cooled, diesel engine
Rated power	259 hp(194 kW)@2200 rpm
Net power	240 hp(180 kW)@2200 rpm
Max. torque	1180 N.m
Displacement	8.3 L

## Undercarriage

Welded load undercarriage frame ensures outstanding durability in the toughest condition. Idler rollers, carriers rollers, track rollers are sealed with a floating oil seal which requires no lubrication for a long time

Number of carrier rollers	2 each side
Number of track rollers	9 each side
Number of idler rollers	1 each side
Number of shoes	48 each side
Width of track shoes	600 mm

## Service Refill Capacity

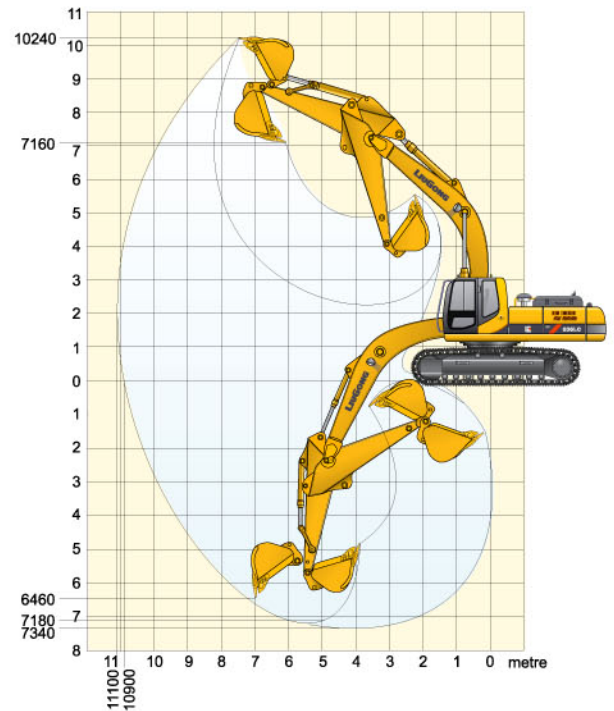
Fuel tank	560 L
Coolant	40 L
Engine lubricants	24 L
Hydraulic system	360 L
Hydraulic tank	240 L

## Hydraulic System

Main pump	two variable displacement piston pump
Maximum flow	2 x 280 L/min
Working pressure	36.3 MPa
Pilot pump	gear pump
Swing motor relief valve	27.5 MPa
Main relief valve boom/arm/bucket	36.3 MPa
Traveling circuit	31.4/34.3 MPa
Swing speed	9.5 rpm
Travel speed	high/low: 5.3/3.4 km/h
Gradeability	30°

## Working Ranges

Arm length	3,200 mm
Maximum reach	11100 mm
Maximum cutting height	10900 mm
* Maximum digging depth	7340 mm
*Maximum leveling depth 2.5m ground level	7180 mm
* Maximum vertical wall digging depth	6460 mm
* Maximum dumping height	7160 mm
* Maximum digging height	10240 mm
Minimum swing radius	4465 mm
Maximum bucket digging force ( ISO )	218/237(moment power) kN
Maximum arm crowd force ( ISO )	157/172(moment power) kN



## Dimensions (mm)

