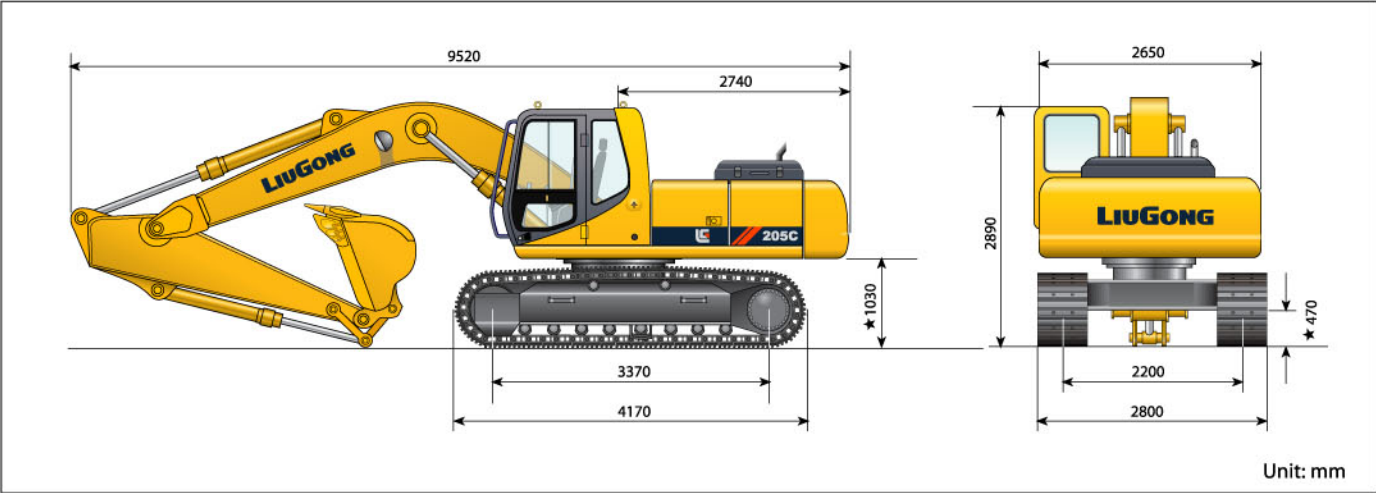
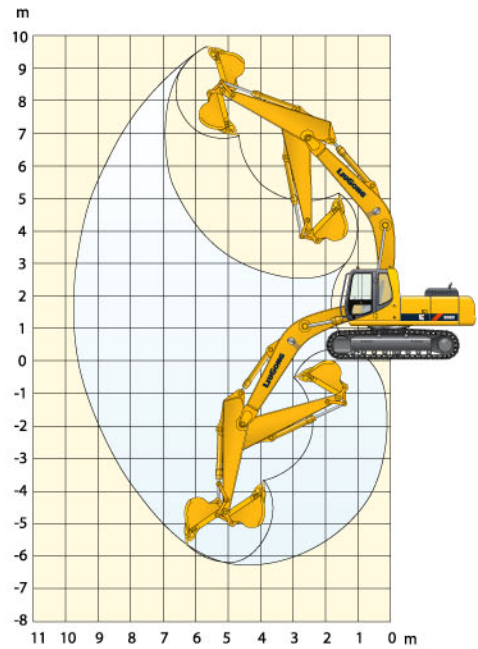


Dimensions



Working ranges



Max. cutting height	9500mm
Max. loading height	6720mm
Max. digging depth	6350mm
Max. digging radius	9820mm
Ground digging radius	9670mm
Max. bucket digging force	115kN
Max. stick digging force	88kN

● Please choose the appropriate bucket according to this chart

Bucket Capacity (m³)	Width (mm)	Recommended		
		Boom: 5680mm		
ISO	Without teeth	With teeth	Arm: 2400mm	Arm: 2700mm
0.73	1040	1048	<2000kg/m³	<2000kg/m³
※0.80	1136	1144	<2000kg/m³	<1800kg/m³
0.88	1186	1195	<1800kg/m³	<1600kg/m³
0.95	1268	1276	<1600kg/m³	<1400kg/m³
1.05	1406	1415	<1400kg/m³	<1200kg/m³

※ 2910mm standard bucket arm

● Reference material density  
(Customers may choose the right bucket according to this form)

Material density	Reference material density
<2000kg/m³ ●	Solid soil, wet sand, compact wet sand, gravel pits, weathered rock (75% rock and 25% soil), wet sand and gravel, wet gravel, and a solid slag and materials with ★, ▲, ◆, ■.
<1800kg/m³ ■	Natural clay, wet clay and gravel, dry gravel (size: 1 / 4 " - 2"), broken granite, slightly moist sand, wet clay, weathered rock (50% rock and 50% soil), wet soil, soft mud flows, dry sand and gravel, broken slag, gypsum block pieces and materials with ★, ▲, ◆.
<1600kg/m³ ◆	Stem-dug clay, dry gravel, broken sandstone, dry-compacting soil, limestone, broken pieces weathered rock (25% rock and 75% soil), rock pieces, and gypsum broken block and materials with ★, ▲.
<1400kg/m³ ▲	Fine clay, bauxite, loose dry sand and materials with ★.
<1200kg/m³ ★	Dry peat, slag, coal, dry clay and gravel.

Do not fill the bucket with material of more than 2,000 m³ density, such as: solid slag, solid sandstone, hematite, pyrite, solid limestone block, solid gypsum block, magnetite, solid granite, iron rock, solid mafic rock.

① Materials and specifications are subject to change without notice.  
① Machines shown may include optional equipment. For more information, please consult our local dealers.

Guangxi Liugong Machinery Co.,Ltd.  
No.1, Liutai Road, Liuzhou, Guangxi, China  
Postcode: 545007  
T+86 772 3886124 3886125  
F+86 772 3886122  
[www.liugong.com](http://www.liugong.com)  
[overseas@liugong.com](mailto:overseas@liugong.com)

**LIUGONG**  
Shaping the Future Together

**205C**  
Hydraulic Excavator



Bucket Capacity	0.73-1.05m³
Rated Power	108kW/2100r/min
Net Power	97kW/2100r/min
Operating Weight	20600kg





# Value and Productivity

Liugong's Hydraulic Excavators successfully integrate well matched world class engines, hydraulic systems, drive systems, and track systems in an advanced computer aided design. This provides our customers with the advanced versatile machine they need to increase productivity and profitability.

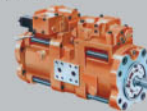
- Powerful and Efficient Engines
- Reliable Hydraulic Systems
- Durable Track System
- Advanced Electronic Control Systems
- Computer Designed Structural Elements
- Attachment options



## Reliable

Equipped with components from reliable world class suppliers means this is a machine that you can depend on in all working conditions.

Pump adjustor

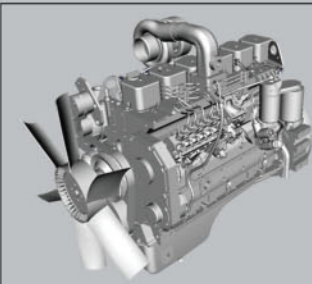


Spare valve



## Powerful

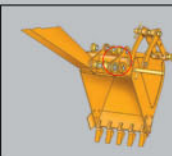
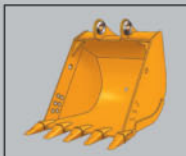
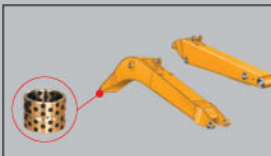
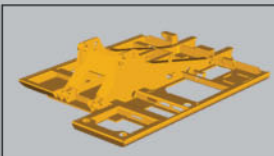
Engines are chosen for their combination of high power, fuel efficiency, and low emissions to meet current environment standards for construction equipment.



## Strength and Durability

The overall appearance of the machine illustrates the carefully considered design.Using advanced design technologies and manufacturing processes, the structural elements are designed to minimize weight and maximize strength.

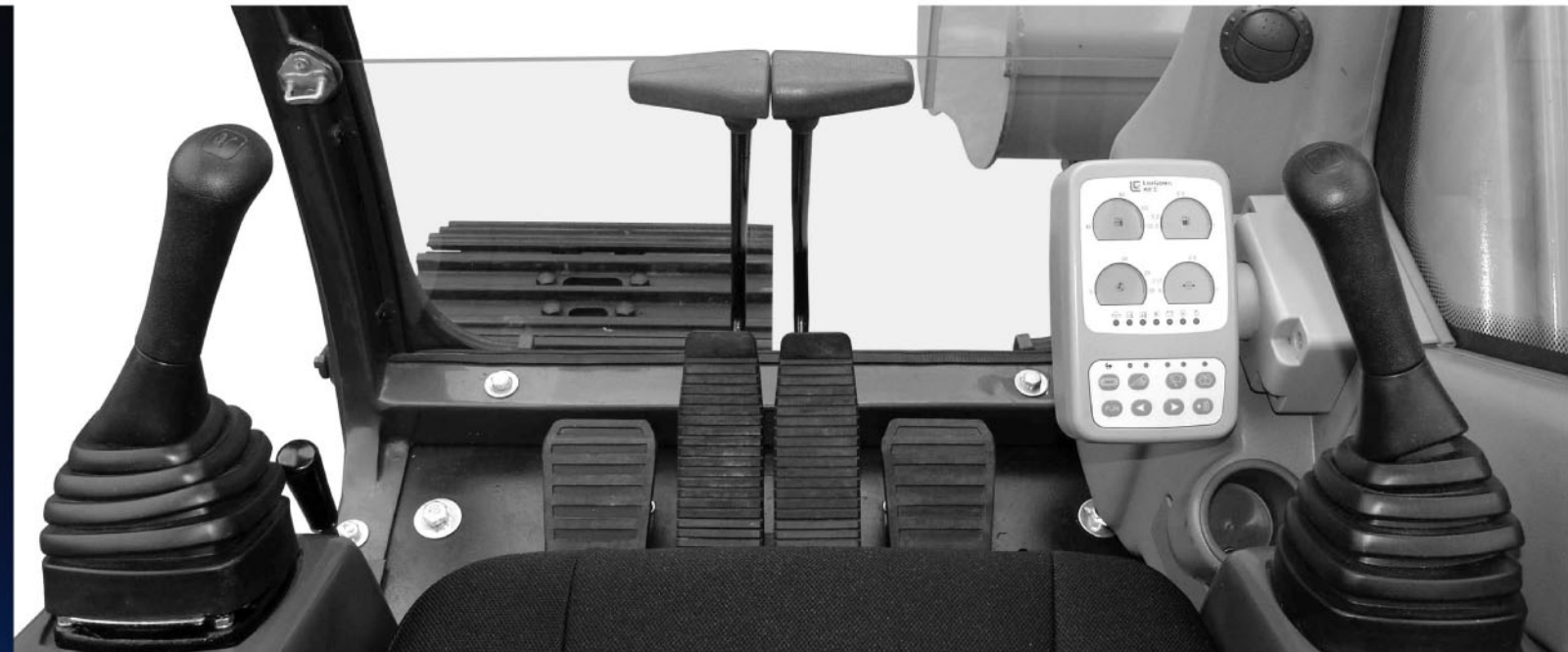
From the flexible X-shaped frame to the close box welded boom and arm, the machine is designed to handle the most challenging operating situations.





## People First

Liugong understands that productivity is more than a reliable and durable machine. It is also about people. Operators are more productive when they feel safe and comfortable during long hours of operation.



## Safety

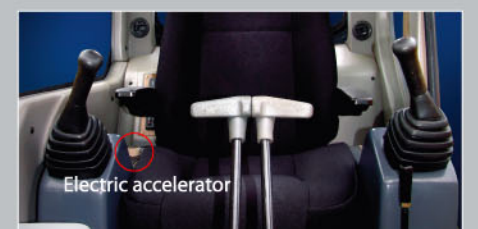
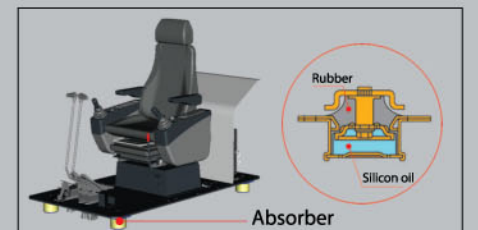
- Large cab with large glass windows on all four sides for vastly improved visibility.
- Re-enforced structure to provide greater strength in case of accidents.

## Simplicity

- Ergonomically designed operator station with state of the art electronic controls simplify operations.
- Instruments conveniently located to help the operator focus on operating the machine.
- Electric accelerator with fuel reduction function, brings you a machine of easy and accurate operation.

## Comfort

- Large cab mounted on hydraulic dampening mounts to reduce vibration.
- Powerful air conditioning system provides a comfortable work environment under all conditions.
- State of the art fully adjustable air suspension chair reduces operator's fatigue.







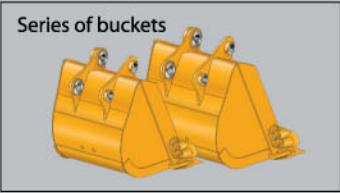
## Easy Service

To reduce downtime, all critical systems are easily accessible for regular maintenance.

LiuGong's large international network of dealers and service providers ensure prompt reliable service for all our customers. We employ a modern computerized parts distribution system running as a separate business unit in LiuGong.



## Versatile



## Specifications



### Engine

Model .....	Cummins 6BT5.9-C
Type .....	6-cylinder, 4-stroke, in line water-cooled, turbocharged diesel engine
Rated power .....	108kW/2100r/min
Net power .....	97kW/2100r/min
Maximum torque.....	597N.M
Displacement .....	5.9L



### Undercarriage

Welded heavy load undercarriage frame ensures outstanding durability in the toughest condition. Idlers, carrier rollers, track rollers are sealed with a floating oil seal providing extended service life.	
Number of carrier rollers.....	2 each side
Number of track rollers.....	7 each side
Number of idlers .....	1 each side
Number of shoes .....	46 each side
Width of track .....	600mm/800mm(optional)



### Service Refill Capacities

Fuel tank .....	316L
Coolant .....	30L
Engine lubricants.....	24L
Hydraulic system .....	260L
Hydraulic tank .....	130L



### Swing System

The superstructure is swung by a high torque plunger piston and 2 stage planetary reduction gear, with an internal spring brake, hydraulic start, and automatic brake when swing control handle in a neutral position.	
Swing speed.....	11.3r/min



### Hydraulic System

Main pump .....	Tandem variable displacement piston pumps
Maximum flow .....	2 x 207L/min
Main reilief valve pressure .....	29.4MPa
Maximum pressure of swing circuit.....	25.5MPa
Maximum pressure of travel circuit.....	29.4MPa
Main relief valve boom/arm/bucket.....	33.3/32.3/34.3MPa
Pilot circuit.....	3.9MPa



### Drives & Brakes

Pilot control has two levels with integrated pedals for precise steering control. The motors and hydraulic pipelines are set inside the track system to prolong their working life. Parking brake and shock-absorbing valves are installed in the motor for stable traveling and reliable braking.	
Travel speed .....	High:0-4.6km/h, low:0-2.9km/h
Gradeability .....	35°(70%)



### Control System

All working movement are controlled by a hydraulic pilot system. The right-hand lever controls the boom and bucket movement while the left-hand lever controls the arm and swing. The two foot-controlled pilot valves with integrated hand levers control travel direction and swing direction. Travel speed is charged by an electric switch.